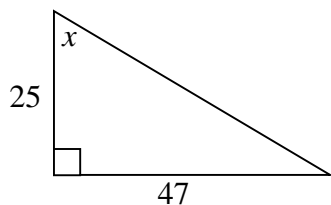
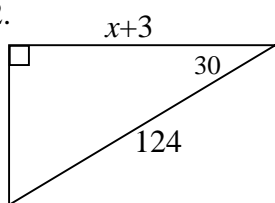


Directions: **For each problem, solve for x .** All angles are in degrees. Answer all 45-45-90 and 30-60-90 problems in simplest radical form. Round all other problems to tenths. Remember to show the basic equation and calculator-ready form on all trig problems.

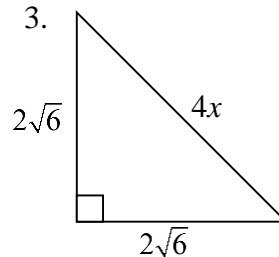
1.



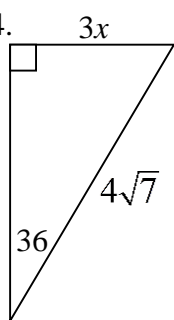
2.



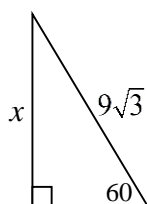
3.



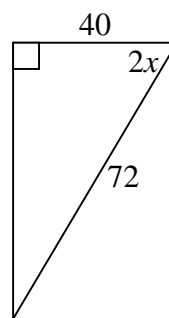
4.



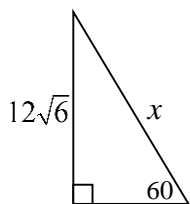
5.



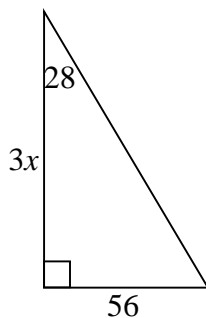
6.



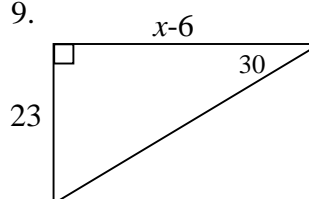
7.



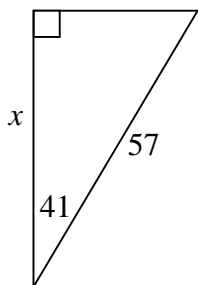
8.



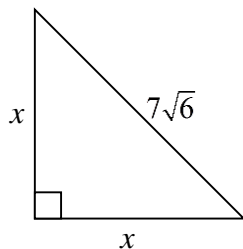
9.



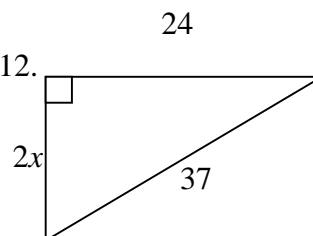
10.



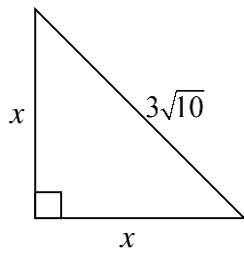
11.



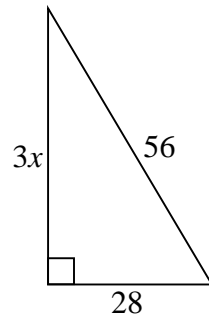
12.



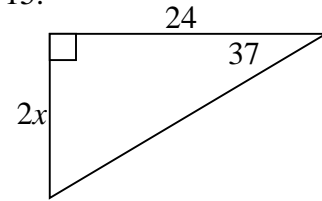
13.



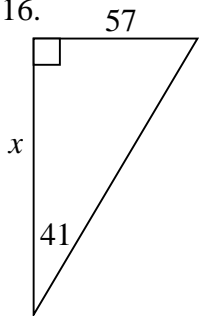
14.



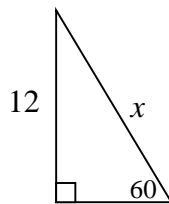
15.



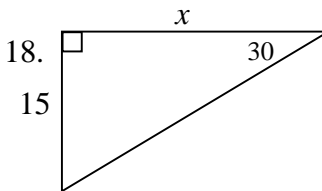
16.



17.



18.



Directions: Show all work neatly on this paper. All angles are in degrees. Remember to show the basic equation and calculator-ready form on all trig problems.

Read carefully. Draw a correct picture. Show all work. Round to hundredths.

19. Find the angle of elevation of a kite using 150 feet of string to attain a height of 93 feet.

20. An airplane is 23 miles from its landing. The angle of depression to the landing is 12 degrees. Find the altitude of the airplane.